

Scandinavian Transformer

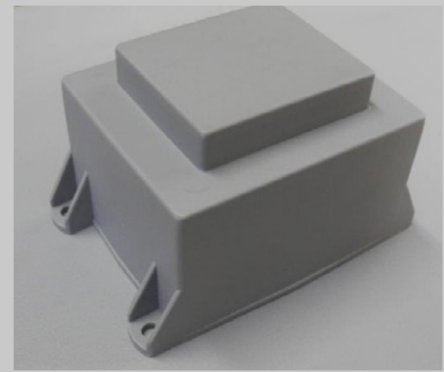
PCB Transformer - Standard

Moulded PCB transformer, 230 or 115/230 VAC primary

Moulded PCB mounting mains transformers. Designed according to the following specifications.

Moulded PCB mounting low voltage mains transformers with a single 230 or twin 115 VAC 50/60Hz primary winding. The two independent secondary windings may be connected in series or parallel to give a wide range of output voltage and current options

- Independent secondary windings suitable for series/parallel connection to give a wide range of output voltage and current options
- Moulded PCB transformers
- 100% electrical and flash tested
- Two or four hole fixing for secure board mounting

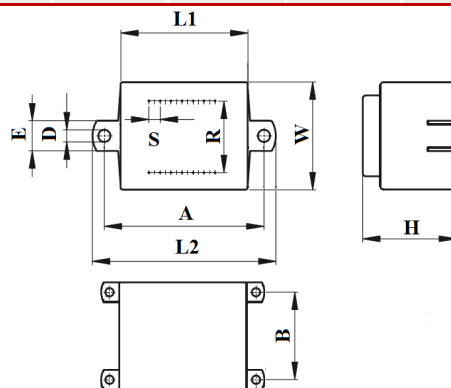


Specifications

Power: 3-12 VA
 Frequency: 50/60 Hz
 Primary: 230 or 115/230 VAC
 Secondary: 2 parallel
 Isolation: 4 kV RMS
 Temp. class: A (105°)
 According to: EN61558-1

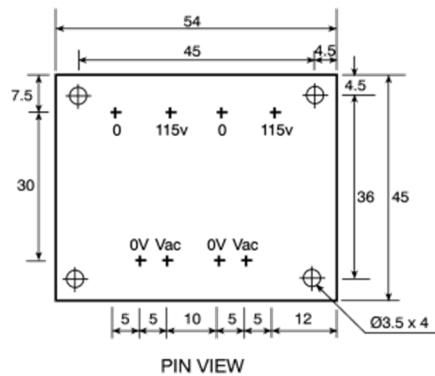
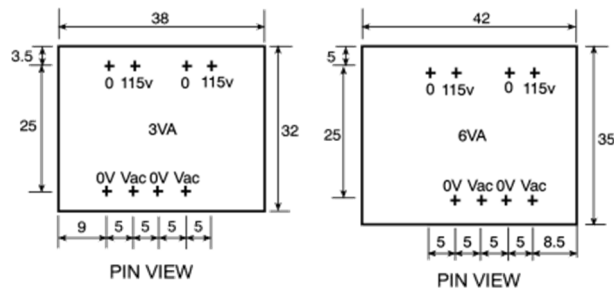
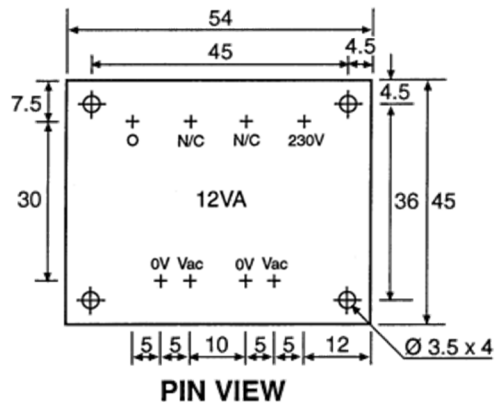
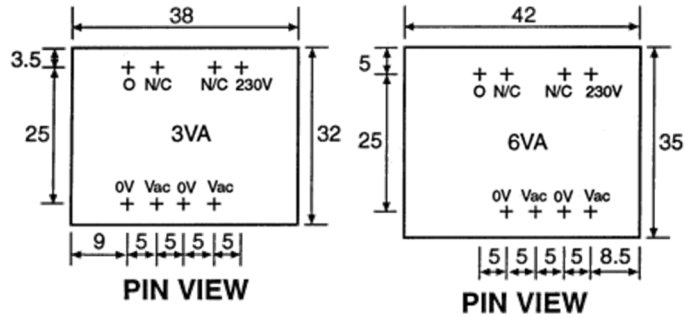


Power	Regul.	Dimensions						Pins	Weight		
[VA]	[%]	L1 [mm]	W [mm]	H [mm]	L2 [mm]	A [mm]	B [mm]	D [mm]	E [mm]	R x S [mm]	[kg]
3	30	42	35	29	56	47.5	-	3.2	10	20x5	0.15
6	25	45.5	38	33	64	55	-	4.2	10	25x5	0.20
12	15	57	48	42	74	65	-	4.2	10	27.5x5	0.4



Subject to errors and changes in product specifications.

Scandinavian Transformer



PRIMARY 0-115-0-115 VAC (FOR 115 OR 230 VAC INPUT)